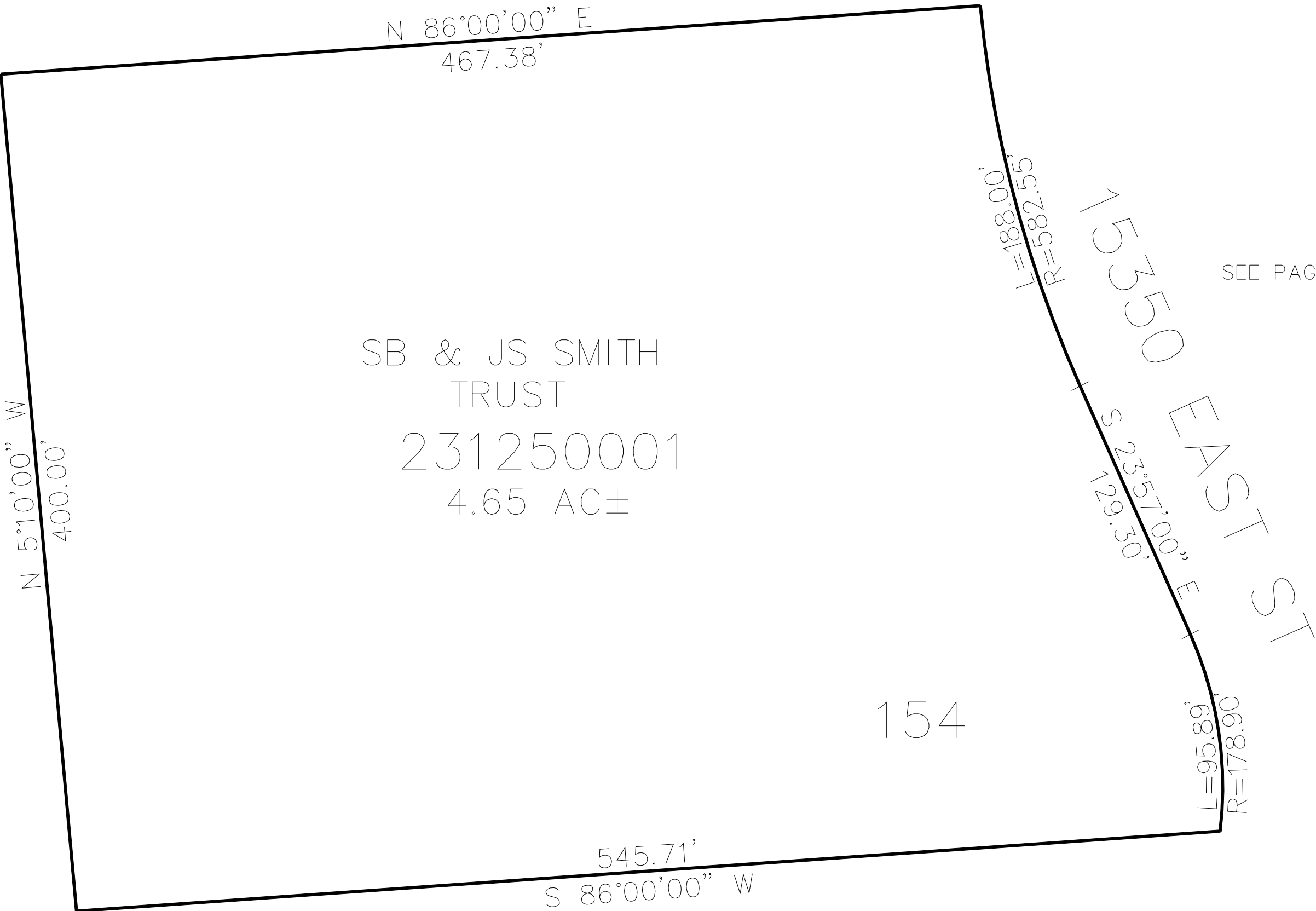


PART OF THE SW.1/4, OF SECTION 11, T.6N., R.3E., S.L.B. & M.  
CAUSEY ESTATES SUBDIVISION No.1 – 1ST AMENDMENT

TAXING UNIT: 520

IN WEBER COUNTY  
SCALE 1" = 50'

SEE PAGE 63



SEE PAGE 63

SEE PAGE 63

SEE PAGE 63

10' UTILITY & DRAINAGE EASEMENTS EACH  
SIDE OF PROPERTY LINES AS INDICATED  
BY DASHED LINES EXCEPT AS OTHERWISE  
SHOWN.

FOR COMPLETE ENG DATA SEE  
ORIGINAL DEDICATION PLAT IN  
BOOK 71, PAGE 31 OF RECORDS.